

Make Inclusive Data the Norm:

Country Landscape Assessment
and Training Provider – Ghana

DATA EXPERT TRAINING

APRIL 28 - 30, 2025

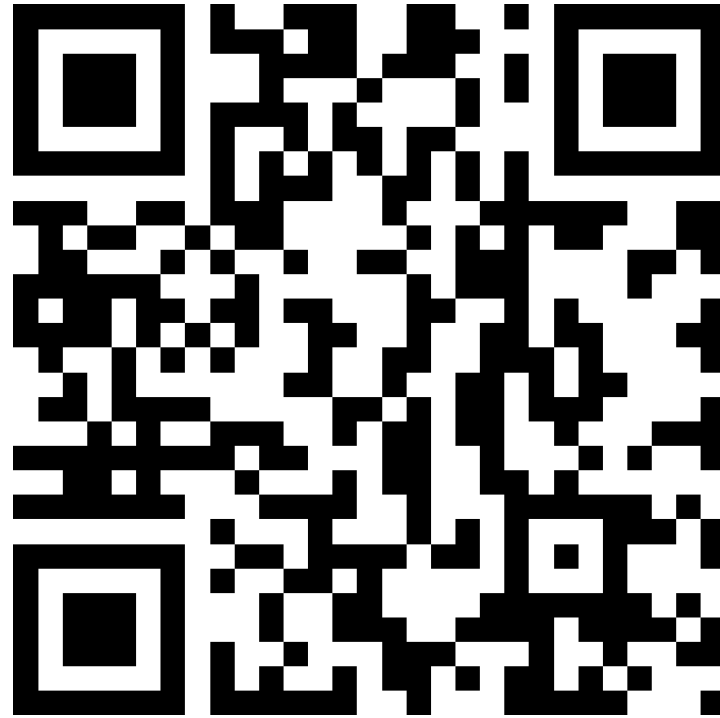


DAY 1

Foundations of Inclusive Data & Citizen-Generated Data (CGD) for FGM/GBV



From 1 to 5, what is your energy level today?



Let's take the pulse of the room!

What We'll Explore Today



Build shared understanding of inclusive and CGD data



Examine real-world applications for FGM/GBV



Explore data governance, ethics, and legal frameworks



Identify roles of key actors and institutions

Session Roadmap – What's Ahead

Session 1: Understanding Inclusive & Citizen-Generated Data

Session 2: Data Collection, Management & Governance

Session 3: Legal & Institutional Frameworks for FGM/GBV Data

SESSION 1: Understanding Inclusive & Citizen-Generated Data



What is Inclusive Data?

- Data that **represents all groups**, including marginalized voices
- Supports **evidence-based policymaking**
- Requires disaggregation by gender, disability, location, age, etc.
- Helps ensure “no one is left behind” in policy decisions



[Introducing the Inclusive Data Charter](#)



What is Citizen-Generated Data (CGD)?

- Data produced directly by citizens or their organizations
- It complements official data
- Reflects lived realities, especially in hard-to-reach communities
- Examples: **Surveys, crowdsourcing, social media tracking**
- Complements **official government data**
- CGD provides direct representations of citizen perspectives, offering an alternative to official government datasets

The Power of Inclusive & CGD in Tackling FGM/GBV

- FGM and GBV are often hidden and underreported.
- Official data may lack detail or be outdated.
- CGD can offer real-time, community-led insight to complement national statistics.

[Importance of citizen-generated data](#)



This video highlights the instrumental role of citizen-generated data in sustainable development efforts, featuring diverse stakeholder perspectives.



- What key message did you take from this video?
- How do you see this applying in Ghana?

Group Activity – Define in Your Own Words

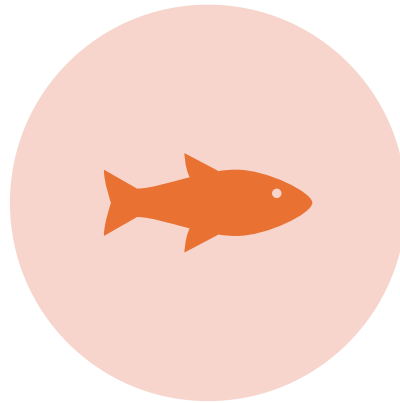
Task

- In your group, define inclusive data and CGD using local terms or examples. Then discuss:
- Where is data often *not* inclusive?
- Each group presents 2 min

Where Is CGD Already Happening?



GSS MOBILE SURVEY ON
GBV



MARINE LITTER TRACKING



COMMUNITY-LED SERVICE
FEEDBACK SURVEYS

Summary of Key Concepts



Inclusive data - representative, disaggregated, actionable



CGD - community-owned, often bottom-up



Both vital for equity-focused policy, especially on FGM/GBV

How Is Inclusive & CGD Data Collected?

Household surveys

Crowdsourcing (SMS, apps)

Community enumeration

Participatory mapping

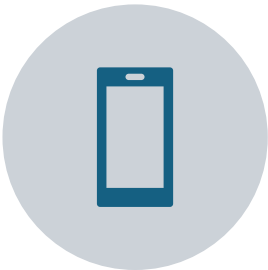
BREAK – Tea/Coffee & Group Photo



Session 2: Data Collection, Management & Governance



Tech That Enables Community Voices



MOBILE
SURVEYS



GEO-TAGGED
REPORTS

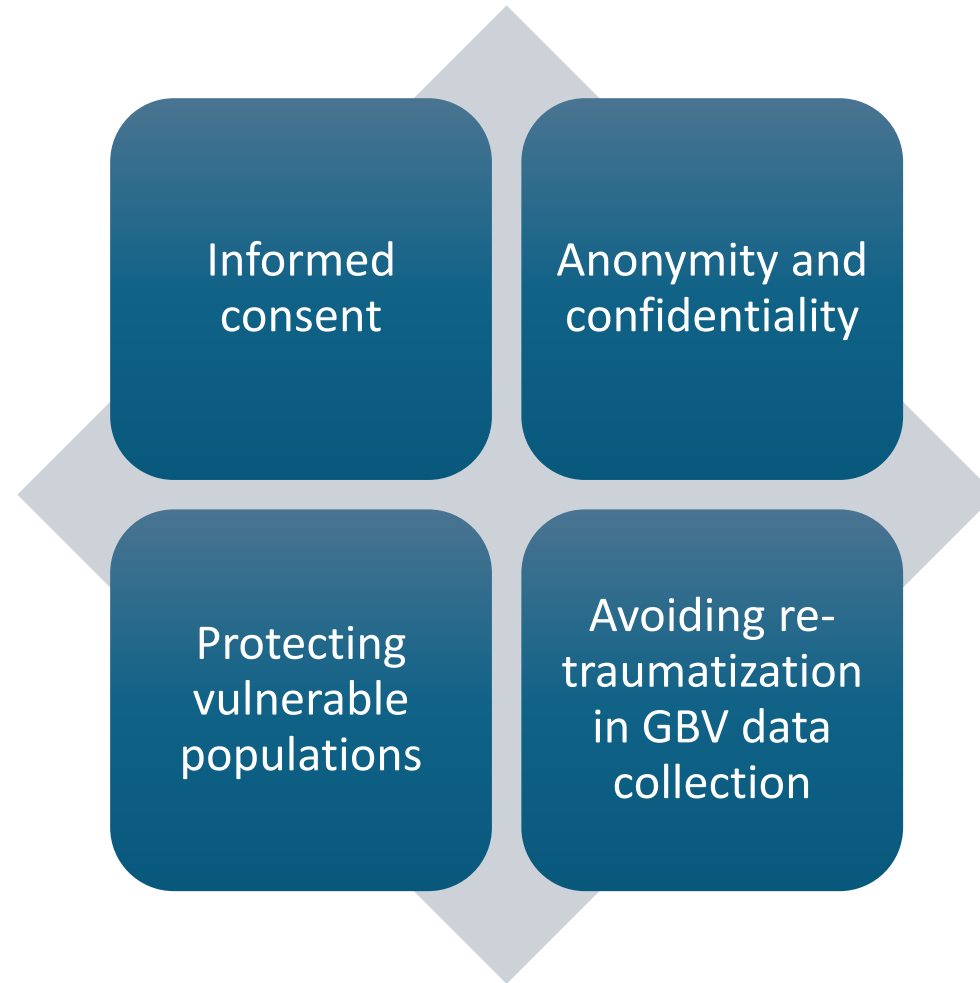


INTERACTIVE
DASHBOARDS



OPEN-SOURCE
PLATFORMS

Ethical Issues in Data Collection



VIDEO – Ethics & Safeguards in Data

 [Research Ethics and Data Collection](#)

- What stood out as a critical risk?
- Have you ever encountered a difficult situation collecting data?

Group Activity – Scenario Role Play



Scenario: Your NGO is planning a GBV data survey in a rural area.



In groups:

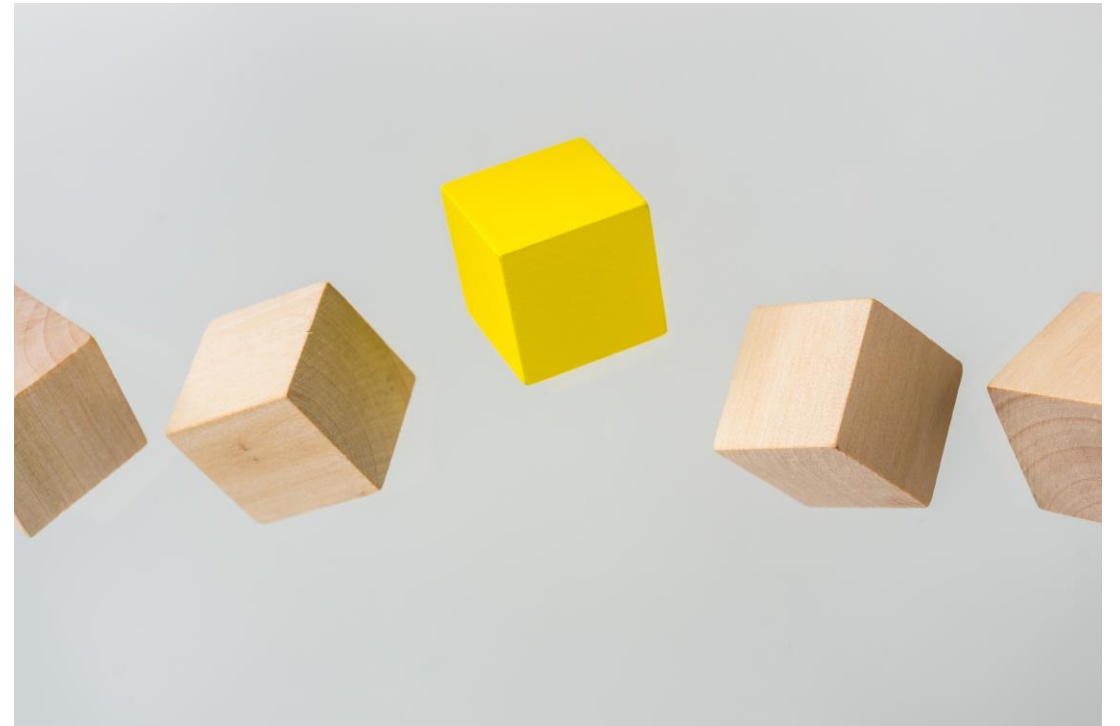
- Identify ethical risks
- Plan how to mitigate them
- Group leaders present strategies

What Makes Data Useful & Trusted?

Good governance means data should be:

- Quality-assured
- Accessible
- Timely
- Secure

Coordination across NSOs, CSOs, and partners is key.



BREAK – Lunch Time Enjoy your lunch. See you after the break!



SESSION 3: Legal & Institutional Frameworks for FGM/GBV Data

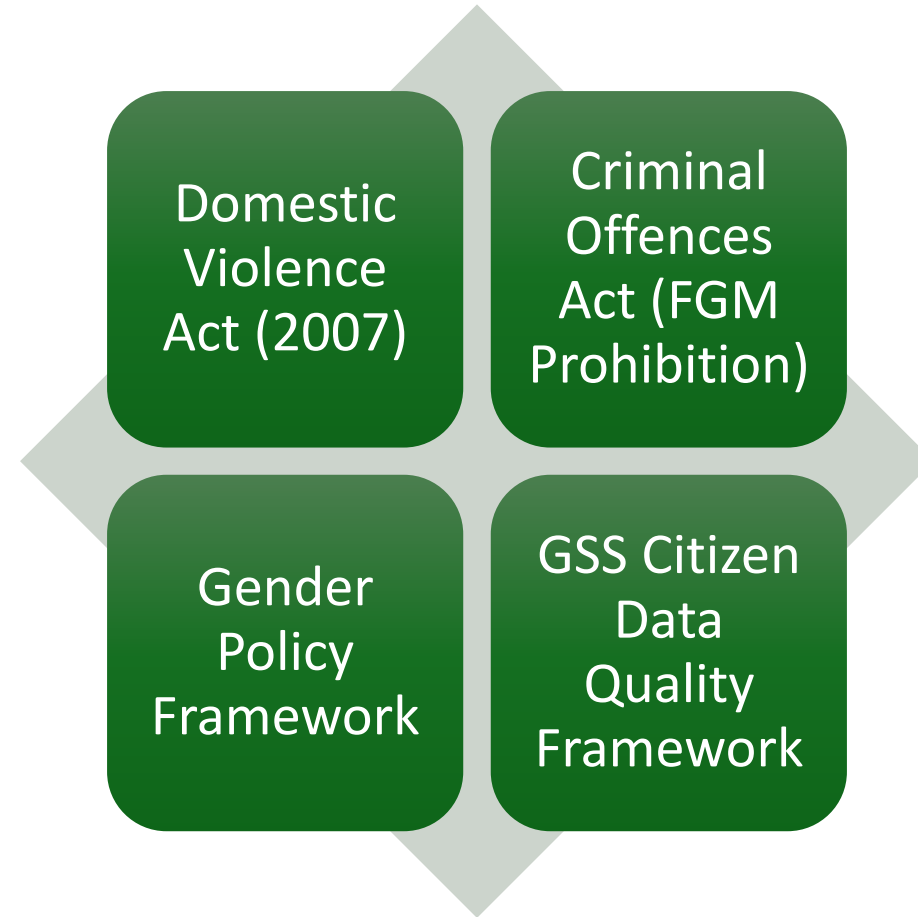


International Commitments

- Sustainable Development Goals (SDG 5, 16)
- UN Conventions on the Rights of the Child & Women
- African Charter on Human and Peoples' Rights (Maputo Protocol)



What Legal Tools Do We Already Have? (Ghana)



Who Does What in the Data Landscape?

NSOs: Data quality, coordination, national statistics

CSOs: Community engagement, CGD, advocacy

Ministry of Gender: Policy, protection, program response

Development Partners: Capacity building, tools, funding

Group Mapping Exercise

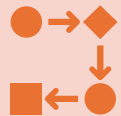
Map out
actors in
Ghana's
FGM/GBV
data space.

- Who collects what? Who uses what? Who's missing?
- Use a whiteboard or paper chart.
- Each group presents a stakeholder map.

Reflections from the Floor



What legal or institutional barriers have you faced in accessing or using data?



Where do you see opportunities for improvement?

What's Sticking With You?



Inclusive and CGD data improve equity



Ethical collection is essential for GBV/FGM data

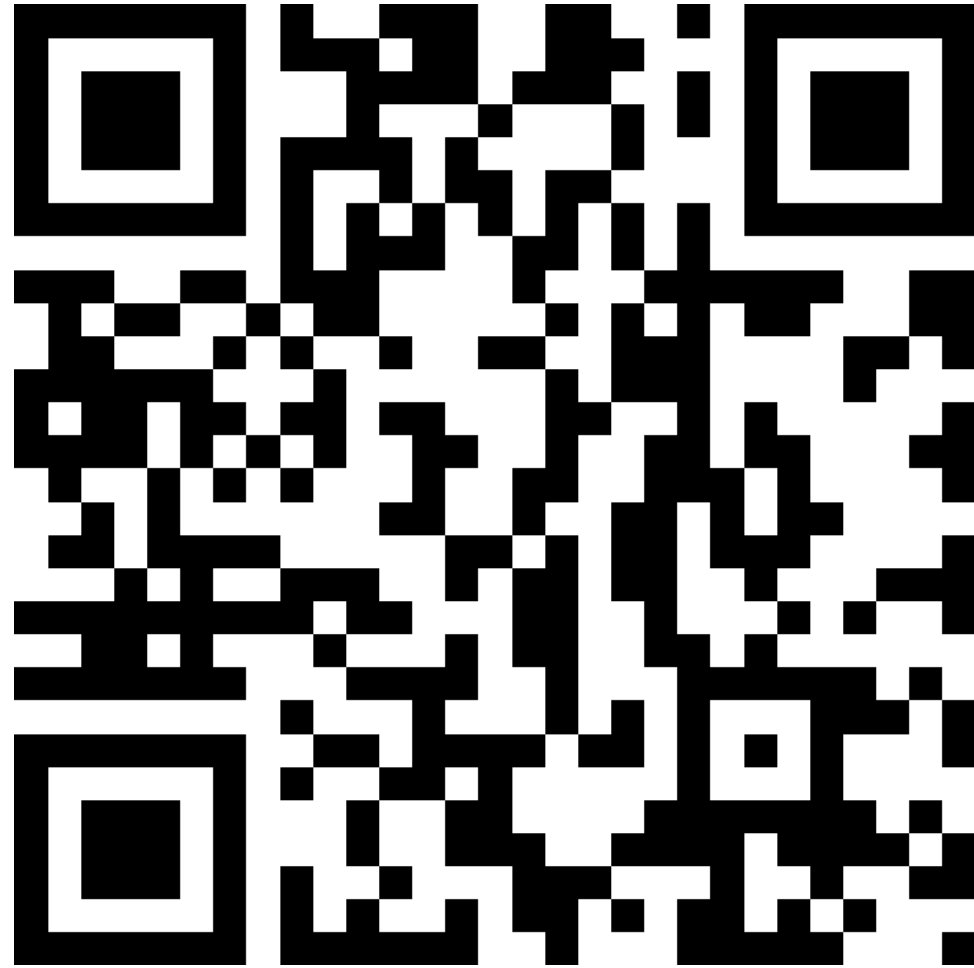


Legal frameworks are in place — but gaps exist



Collective action across institutions is critical

Feedback & Next Steps



Preview of Day 2: Applying
Inclusive & CGD Data

THANK YOU!



DAY 2

Applying Inclusive Data Approaches for Action

From Data to Impact – Analysis, Communication & Project Design for FGM/GBV



Welcome to Day 2

Brief recap of Day 1 :

- Inclusive data and CGD concepts
- Ethical collection and governance
- Legal/institutional responsibilities



Slido Poll – Reflections from Day 1



What was your biggest insight or takeaway from yesterday?

What We'll Explore Today



How to assess and improve data quality



Ways to clean and validate inclusive and CGD



Tools for data analysis and visualization



Case studies of data use in action



Access, integration, and cross-sector collaboration

Session Roadmap – What's Ahead

Session 4: Data Quality, Cleaning & Validation

Session 5: Data Analysis & Visualization

Session 6: Data Access & Integration

Session 4: Data Quality, Cleaning & Validation



What Does 'Data Quality' Mean to You?



- How do you define or measure quality in data you use or produce?
- Let's surface our working definitions.

Key Dimensions of Data Quality

Accuracy

Timeliness

Completeness

Consistency

Relevance

Accessibility

Why Data Quality Matters for FGM/GBV

- People have overlapping identities that affect vulnerability
- Intersectional analysis brings depth to decision-making
- Especially vital in GBV/FGM contexts

 [What is Data Quality and Why is it Important? -](#)

- What stood out from the video?
- Have you ever seen a decision go wrong due to poor data?

Group Activity – Assessing Data Quality



1. Take a real data source or fictional example
2. Assess it against the six quality dimensions
 - What's strong?
 - What's missing?
 - Share out in plenary.

Group Activity – Analyze a Mock Dataset

1. Use simplified CGD dataset on FGM/GBV
2. In groups: find key patterns and write down one major insight
3. Groups present short summaries

Session 5: Communicating Data for Advocacy & Policy



Why Communication is Critical



- Policymakers, donors, and communities don't engage with raw data
- Your job: simplify, visualize, and humanize data
- The right message can drive real change

Telling a Compelling Data Story



- Combine numbers with human narratives
- Avoid technical overload — lead with meaning
- Data doesn't change minds, stories do

Choosing the Right Visuals



Match your message to your medium

Pie charts = proportions

Maps = geographic trends

Line charts = change over time

Tips: clarity, labels, color, cultural context

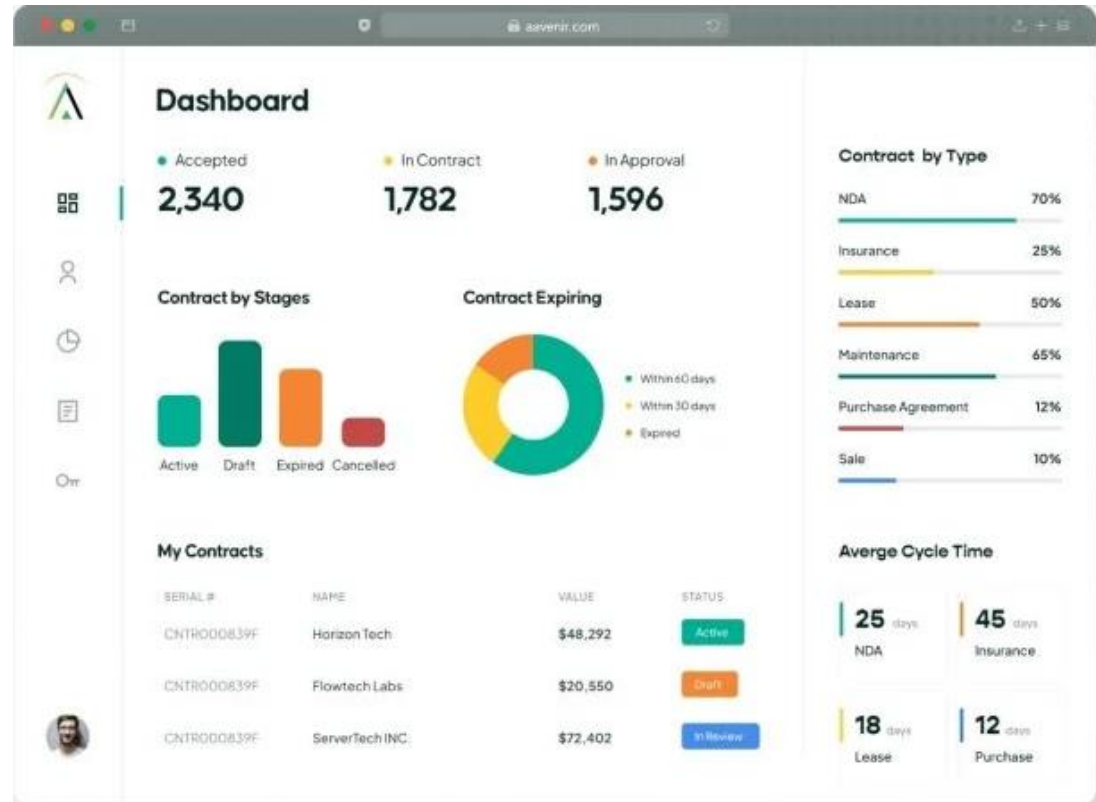
Video – Data Storytelling in Practice



- Show short example (e.g., UN Women or Data4SDGs campaign)
- What made this story work? What can we learn for our work?”

Group Activity – Build a Data Brief

- Each group picks one insight from earlier dataset
- Create a 1-page visual summary or dashboard concept
- Present it to the room as if to a government official



SESSION 6: Designing Inclusive Data Projects

- Clear objective
- Inclusive methods and audience
- Thoughtful data sources (CGD/official)
- Path to use the data for real change

Case Snapshots



- Ghana: Mobile GBV survey
- Colombia: Intersectional data within NSO
- Kenya: CGD criteria linked to disability and gender

Key Design Components



- What is the problem?
- What data do we need?
- Who is involved (data users/producers)?
- What safeguards must be in place?
- How will the data lead to decisions?

Group Activity – Design Your Own Mini Project



- Groups design an inclusive data project on FGM or GBV
- Use a project template: include objectives, data source, method, impact path
- Present to the room with feedback from peers

Day 2 Summary

- Analysis helps uncover truth
- Communication turns data into action
- Projects link people, policy, and evidence
- YOU are a driver of inclusive data transformation

Slido – Day 2 Check-Out



One word to describe today



Day 3: Collaboration, Use Cases & Roadmap for Inclusive Data Action

Bridging Knowledge and Action through Partnerships, Practice, and Planning

Reflections



Congratulations on reaching the final day!



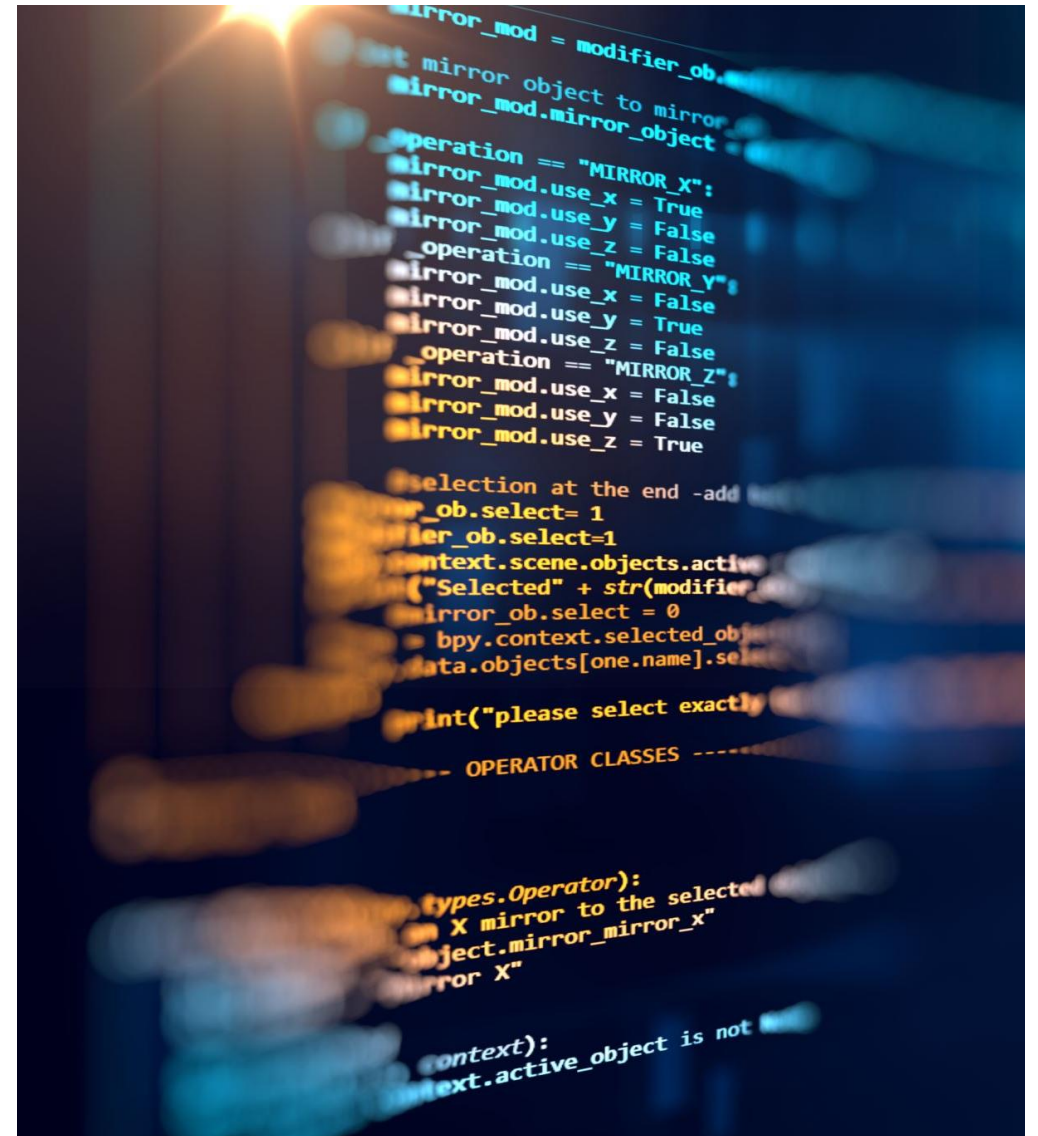
Today is all about applying what we've learned



Focus on collaboration, real-world challenges, and future planning

Objectives for Day 3

- How to use data to influence policy and programming
- Examples of data-led interventions
- Collaborative planning for data use
- Developing a data action plan



Day 3 Agenda

- Session 7: Using Data to Influence Policy & Interventions
- Session 8: Workshop – Developing a Data Action Plan

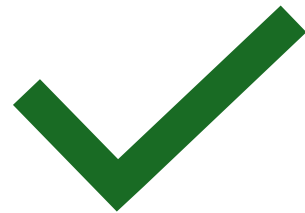
Session 7:
Using Data to
Influence
Policy &
Interventions



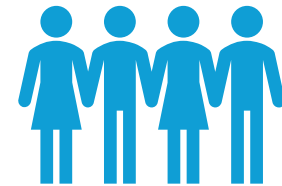
Why Collaboration Matters



FGM/GBV data is everyone's responsibility



No single actor has all the tools or access



Inclusion requires diverse voices and cooperation

Data for Influence – What Works?

Think of a time when data influenced a decision. What helped it succeed?
What blocked it?

Ingredients of Data-Driven Policy



Clear, compelling evidence



Right timing and audience



Data storytelling



Partnerships with advocates and champions

Case Studies – Real-World Impact

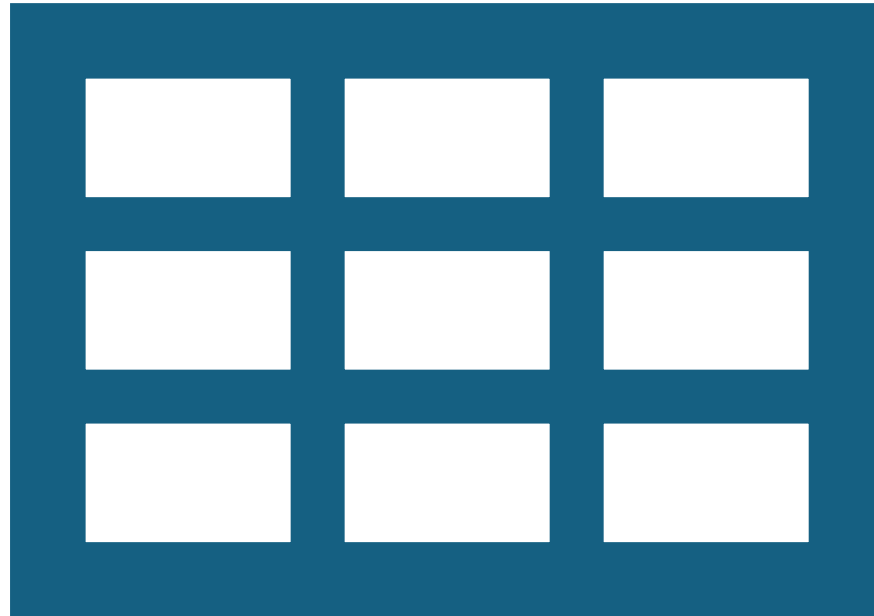
- Colombia: CGD used in community safety policy
- Ghana: Mobile survey informed social protection for GBV survivors
- Kenya: Community mapping identified FGM hotspots Prompt: Which example resonates most and why?



Reflections



Session 8:
Workshop –
Developing a
Data Action
Plan



Ghanaian & Regional Examples

Joint CGD surveys by NGOs & GSS

Local chiefs working with health workers on GBV referrals

National–subnational data flow partnerships



Group Activity – Data Use Simulation

Scenario: You have inclusive or CGD findings showing high rates of early marriage in a district.
Plan:

- How to frame the story
- Who to engage
- What formats to use
- What outcome you seek Groups present quick strategies



BREAK – Tea/Coffee Take a break and re-energize!



Developing an inclusive data implementation strategy

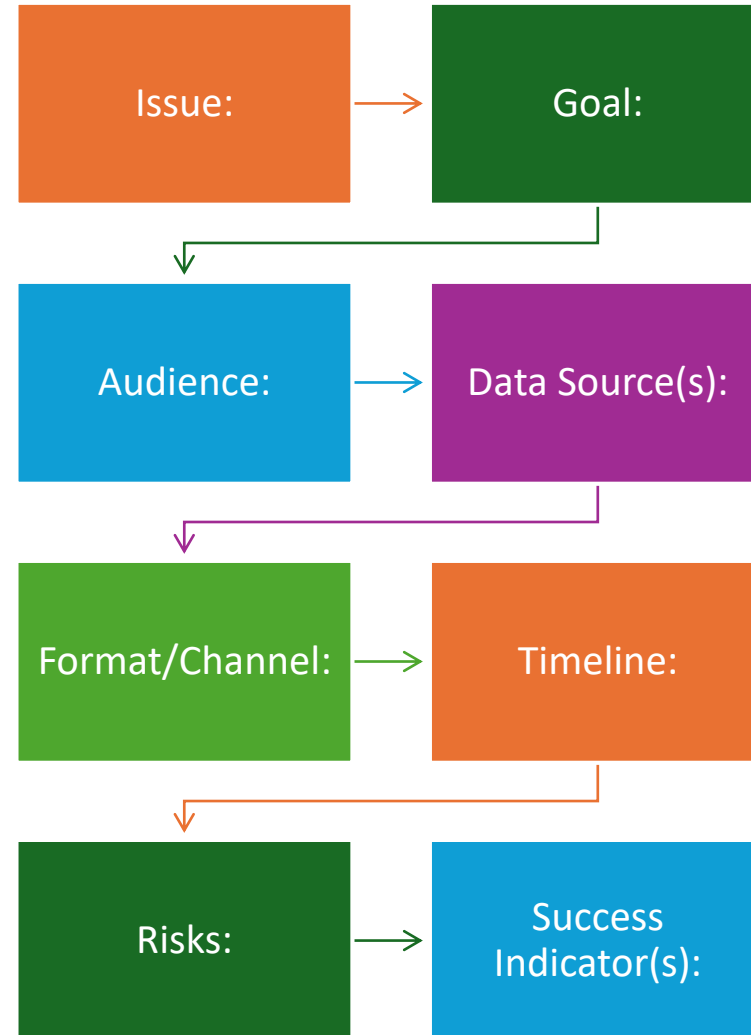


Workshop – Data Action Planning

In teams:

- Choose a real or hypothetical FGM/GBV data issue (check data.gov)
- Set a goal (policy, practice, awareness, service delivery)
- Define the data needed, partners, timeline, and risks
Begin drafting your plan.

Action Plan Template



- BREAK – Lunch Time.
- Enjoy your meal – we'll wrap up together soon!



Strategy Session – Making It Stick

What's needed to make inclusive data part of how your institution works?

- Capacity?
- Budget?
- Mandates?
- Relationships?

Collaboration & Sustainability Planning



What does long-term success look like?

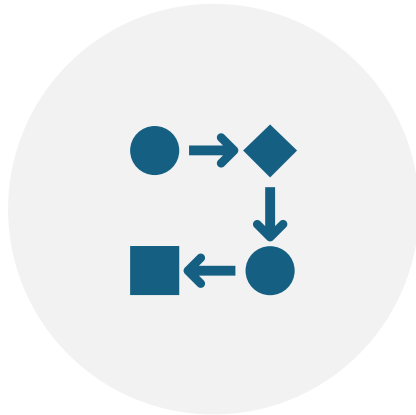


Who do we need to keep talking to?



What commitments can we make today?

Planning for Action



HOW DO WE MOVE FROM IDEAS TO CHANGE?



WHAT CAN YOU REALISTICALLY DO WITHIN YOUR ROLE OR INSTITUTION?



START SMALL, THINK BIG

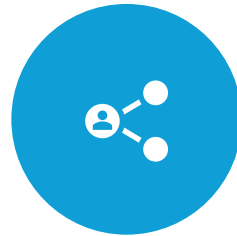
Roadmap Components



WHAT ISSUE WILL
YOU ADDRESS?



WHAT DATA WILL
YOU USE OR
GENERATE?



WHO WILL YOU
PARTNER WITH?



WHAT ACTION WILL
YOU TAKE WITHIN
3-6 MONTHS?



WHAT SUPPORT DO
YOU NEED?



Final Reflections

How has your view on inclusive data changed in the past 3 days?"



THANK YOU!